

Parent information sheet

This activity consolidates the previous weeks learning on doubling.

Use the PDF slides to recap doubling.

Activity 1—If possible cut out each square, children match up the pictorial to the correct sentence.

Activity 2—Add the correct amount of spots to the lady bird to show double.

Once they have done this complete the sentence structure and writing the matching calculation eg double 4 is 8 , $4 + 4 = 8$.

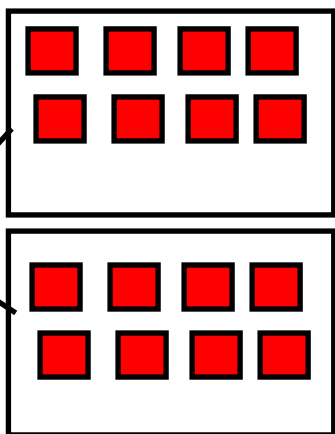
Challenge—Children could draw the correct part part whole model to represent the ladybird. The whole would be how many altogether, the parts would be the two equal numbers that make the whole.

Activity 3—Use the part part whole models to fill in the sentence.

Children's learning is deepened when they look at the same skill in a different context or working backwards.

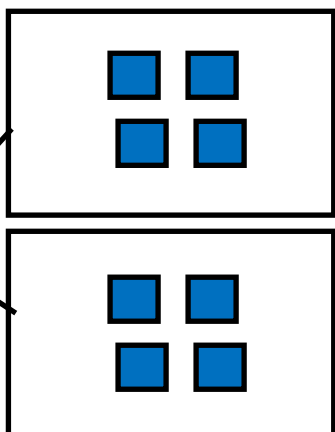
Activity 1—Cut up and match together.

?



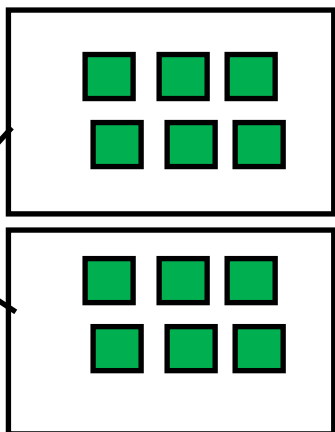
Double 8
is 16

?



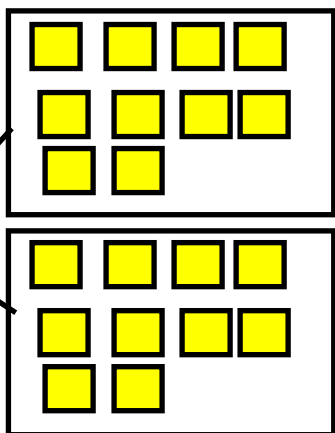
Double 4
is 8

?



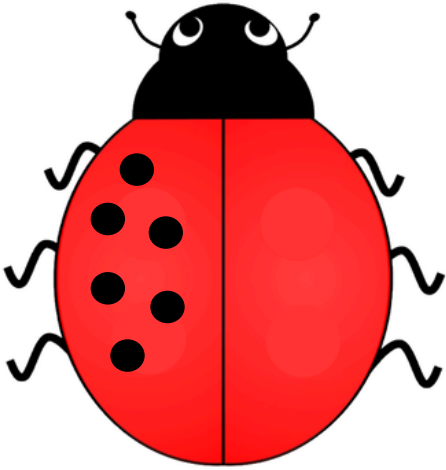
Double 6
is 12

?

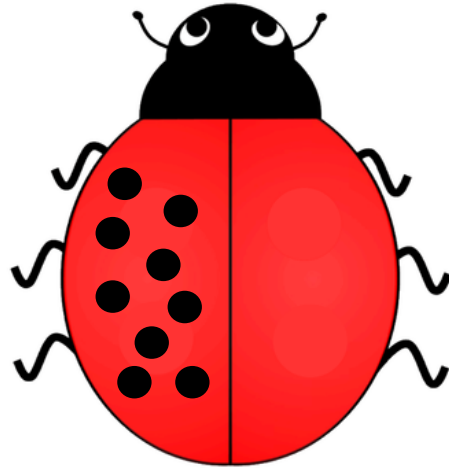


Double 10
is 20

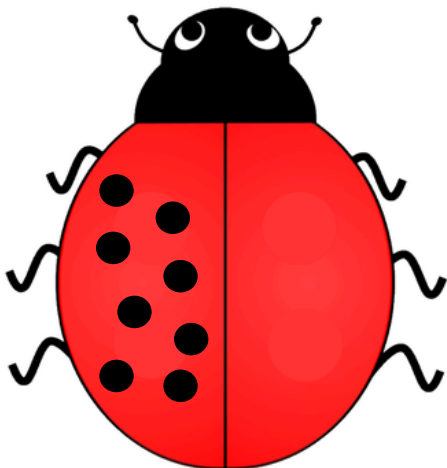
Activity 2—Double the spots on the ladybird and finish the sentence structure and calculation. You could use pen, cotton wool sticks and paint, pencils, crayons etc.



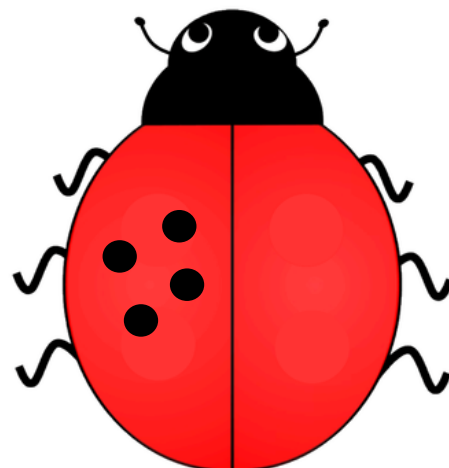
Double _____ is _____.
_____ + _____ = _____.



Double _____ is _____.
_____ + _____ = _____.



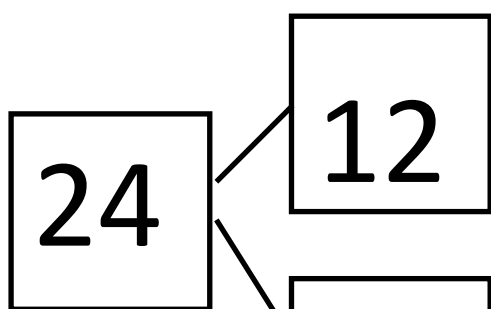
Double _____ is _____.
_____ + _____ = _____.



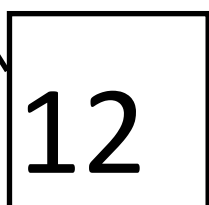
Double _____ is _____.
_____ + _____ = _____.

Challenge—Draw the part part whole models to match each lady bird double.

Activity 3—use the part part whole model to finish the sentence.



Double _____ is _____



Double _____ is _____

