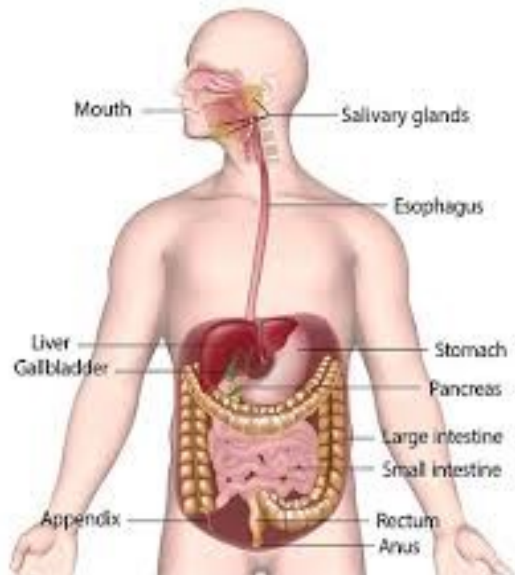


# Y4 Digestion



## Key Learning Objectives:

- Describe the simple functions of the basic parts of the digestive system in humans.
- Identify the different types of teeth in humans and their simple functions.



## How you can help at home:

- Identify some different carnivores and herbivores and discuss how they may relate to each other.
- Discuss what sorts of food it is good to eat and in what proportions it is good to eat them in.

## Key Vocabulary

Word	Definition
digestion	The process of turning food into nutrients and waste products.
oesophagus	The tube that connects your mouth to your stomach.
intestines	A long series of tubes that absorb nutrients and water.
fibre	Fibre allows food to pass well through your body.
nutrients	Things in food your body needs to survive.
canine	Sharp tooth used for gripping food.
molar	Tooth that is used for crushing and grinding food.
carnivore	A creature that eats other animals.
herbivore	A creature that eats plants.
enamel	A tough surface layer that covers your teeth.