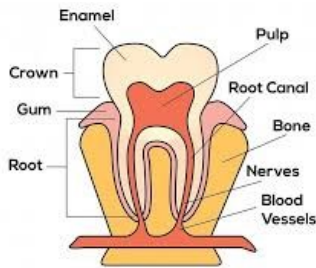
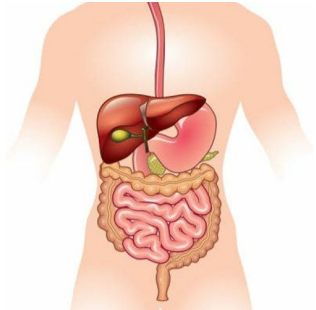


Y4 Digestion and Teeth



Tooth Anatomy

End Points:

Describe the simple functions of the basic parts of the digestive system in humans.

Identify the different types of teeth in humans and their simple functions.

Prior Learning

Identify that animals, including humans, need the right types and amount of nutrition, and that they cannot make their own food; they get nutrition from what they eat.

Future Learning

Locate and name the parts of the human circulatory system and understand circulation.

Key Vocabulary

Word	Definition
digestion	The process of turning food into nutrients and waste products.
oesophagus	The tube that connects your mouth to your stomach.
intestines	A long series of tubes that absorb nutrients and water.
fibre	Fibre allows food to pass well through your body.
nutrients	Things in food your body needs to survive.
canine	Sharp tooth used for gripping food.
molar	Tooth that is used for crushing and grinding food.
oral hygiene	The process of looking after your teeth properly
enamel	A tough surface layer that covers your teeth.

How you can help at home:

Discuss what sorts of food it is good to eat and in what proportions it is good to eat them in.

Discuss how to look after your teeth with your children.